



Best of Show

We recap our newest event: *The Holiday Gelatin Salad Show*
See p. 5

Bridges of the Deschutes

The first installment of a two-part series
See p. 2



The Homesteader

Deschutes County Historical Society Newsletter—JANUARY 2025

HAPPY NEW YEAR!

Here is a sneak peek at what the Deschutes County Historical Society has in store for

2025

February 22

Deschutes County Historical Society Members' Luncheon

April 5

"A Novel Idea Celebration" exhibit opening

May

Historic Preservation Month

June 7

Oregon Archaeology Roadshow

June 19

Juneteenth Free Day

June 22

Volunteer Picnic

July 4

Fourth of July Open House

August 9

4th Annual Antique Fair

August 29-30

The Little Woody Barrel-Aged Beer Festival

September 13

Festival of Cars

November 7-8

Annual Chili Feed & Raffle

December 13

Holiday Gelatin Salad Show



Deschutes River Bridges

by Brad Lemmon

In February 2024, Mike Berry, John Kent, John Frye, and I started working on identifying every Deschutes River bridge that has existed in Deschutes County (about half of the Deschutes River's 252-mile length is in Deschutes County). I got this research idea while looking through John Frye's Deschutes County Timeline spreadsheet and seeing a few bridges I had never heard of (there is a printed copy of the spreadsheet at the museum front desk). The four of us tried to find each bridge on a map, in an article, and in a photograph. For each dismantled bridge, we visited the site and took photos of any remnants. After about seven months of research and field trips, we found evidence of 40 existing bridges and 30 dismantled bridges. We also found articles mentioning three additional bridges in the Tumalo area that went to islands, but we haven't found their exact locations (old photos and maps show that islands in that area have built up and washed away over the years).

Besides the Deschutes Historical Museum, we found documentation at the Deschutes Public Library, the Central Oregon Community College, the Oregon Institute of Technology in Klamath Falls, the Oregon Historical Society in Portland, the Deschutes County's Records Research website, the Tumalo Irrigation District office, via on-line USGS maps, and via on-line 1935 Deschutes County Metsker maps (the museum has paper copies of the 1944 and 1972 Deschutes County Metsker maps).

The research resulted in a hand-drawn map of the bridges, an Excel spreadsheet of relevant information, and a thumb-drive of all the maps, articles, and photographs we collected. A copy of everything is at the museum. We hope to eventually display some of this information on a map on the museum website.

The rest of this article briefly discusses three dismantled bridges and another article in June will discuss three more. Of course, every bridge could easily be its own multi-page newsletter article (hint-hint to aspiring researchers and writers). For many of the bridges, our group barely scratched the surface of why it was built and why it was torn down. The hand-drawn bridge map will be the June 2025 Map of the Month.

Brownell Bridge

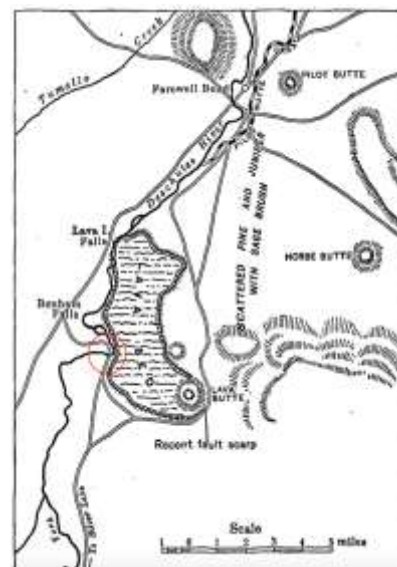
The Brownell bridge was just upriver from Benham Falls and first shows up on an 1899



Besson Bridge Remnants, summer 2024 from the West Bank of the River



John Sisemore has removed the planks from the Brownell bridge, just above Benham falls, and brought them down for use on the county bridge at the Sisemore ranch, where repairs are needed. Mr. Sisemore says he purchased the planks from Brownell. This leaves that upper bridge dismantled and persons traveling in that country should take notice of the fact and save themselves time and annoyance.



Upper Left: Brownell Bridge (looking upstream)

Upper Right: Brownell Bridge (Circled in Red on a 1905 Bend-area Map)

Lower Left: Bend Bulletin November 6, 1903

- Continued on page 3

Deschutes Historical Museum

129 NW Idaho Avenue
Bend, OR 97703
Open Tuesdays-Saturdays
10:00 a.m. to 4:30 p.m.
541.389.1813

www.deschuteshistory.org
info@deschuteshistory.org

Museum Staff:

Kelly Cannon-Miller, Executive Director
Vanessa Ivey, Museum Manager
Rebekah Averette, Collections Manager
Tracy Alexander, Membership Officer
Michelle Patrick, Visitor Services



2025 DCHS Board of Directors:

Jane Williamson, President
Karen Green, Vice President
Heidi Kennedy, Secretary/Treasurer
Adrian Bennett, Past President

Board Members:

Paul Claeysens,
Tony DeBone, Greg Fulton,
Eric King, Brad Lemmon,
Liz Rink, Glenn Voelz



Complete minutes of the meetings of the Board of Directors are on file with the Museum office.

Continued from P. 2— Deschutes River Bridges

map drawn by George F. Allardt, a San Francisco-based Civil Engineer. The map has a caption “Brownell’s New Bridge.” DeWitt Clinton Brownell (b. 1851) owned a house on the west side of the Deschutes River. A sawmill was planned, likely to build an irrigation flume for a canal that was going to start at Benham Falls – but the canal was never built. Brownell left the area in 1900. By November 1903, John Sisemore bought the bridge planks (see *Bend Bulletin* article on page 2). The bridge also appears on a 1905 map. The bridge was labeled “abandoned” on a 1914 USGS river survey map.

Besson Bridge

The Besson bridge was built in late 1942 or early 1943 at Camp Abbot, the WWII army engineer training camp, now Sunriver. It was named after Colonel Frank Besson the camp commander. The bridge was re-planked in 1953 and torn down in 1960. From the current Besson Day Use parking area, it is an easy walk to see the remains of the buttress on the west bank of the river and other bridge remnants in the river. The east side of the river here is private property.

Eight bridge trusses will be sold March 22, at 2 p.m. at the headquarters of Deschutes National Forest, in the post office building in Bend. Sealed bids are to be submitted in advance. The trusses, each approximately 80 feet long, are in place at the Colonel Besson Bridge site on the Deschutes River, 15 miles south of Bend.

Bend Bulletin March 10, 1961



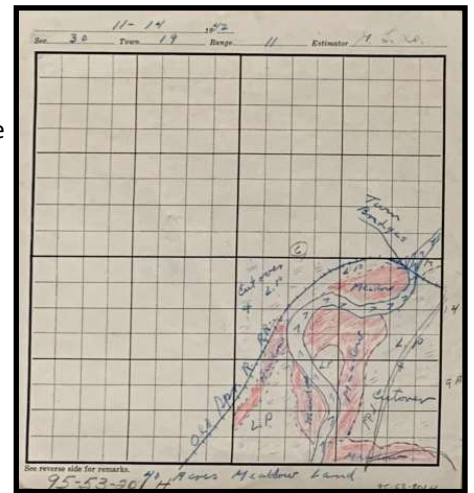
Besson Bridge Shown on Camp Abbot Map

Shevlin-Hixon South (unofficial name)

NEW AREA FOR LOGGING WILL BE OPENED UP
 Two Year Task To Be Begun By Shevlin-Hixon
BRIDGE BEING BUILT
 Camp To Be Installed This Fall West of Spring River—Start Logging In November or December—Road Bridge To Be Installed

Many people know about the railroad trestle that was in Bend near the mills and the Shevlin-Hixon railroad bridge that was near Benham Falls (currently a footbridge). But there were two other railroad bridges (“Shevlin-Hixon South” and another one that will be written about in June). “Shevlin-Hixon South” was built in 1922 (see article at left) and was at the location of the current Cardinal Landing footbridge in Sunriver. There was a road bridge next to the railroad bridge and the pair is called Twin Bridges on a 1935 USGS map. The railroad bridge existed until at least 1930, because someone drove a stolen 1928 Buick off of it then. The bridge does not appear on a 1943 aerial photo of the area, but the railroad grade is still visible. An October 1922 train crash occurred slightly west of this bridge and killed three people.

Left: *Bend Bulletin* June 29, 1922 (This was a special weekly edition of the Bulletin that does not show up on newspapers.com, but did show up on oregonnews.uoregon.edu)



Shevlin-Hixon South Railroad Bridge shown on 1942 Timber Cruising Map (probably drawn by George Conklin)



Map and Document of The Month

The next time you visit the Deschutes Historical Museum, carve out some time to explore the Map and Document of The Month. Volunteer researcher and this month’s history article author, Brad Lemmon, encountered many interesting maps and documents while working with his TAG group of fourth graders last spring. “As I spent more and more time at the museum, I became aware of the amount of interesting things that are in the drawers and boxes. I wanted people to see more of those things than they get to see in the permanent or rotating exhibits.”

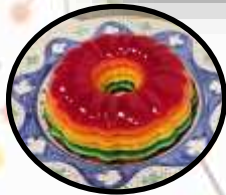
The January 2025 map of the month shows land ownership along the Deschutes River. It was probably drawn by Levi Wiest around 1901. It also depicts the Staats, Sisemore, Feldewert, and Brownell bridges.

The document of the month is a 1984 Deschutes Historical Society calendar featuring “Deschutes County Pictures of Yesteryear.” The calendar sold for \$3.95 and was likely a society fund-raiser.

We are truly humbled by the overwhelming response our community has shown to our Annual Giving Campaign. Thanks to you all, we surpassed our goal by over 50%! On behalf of the staff, volunteers, and board of directors of the Deschutes County Historical Society, Thank You for supporting our mission to preserve, promote and celebrate our local history.

Patti Adair	Patrick Griffiths	Marti Nickoli
Tracy Alexander	Maggie and Tom Gunn	Rich and Lori Niederhof
Bette Andrew	Faith Hall	Dave and Aleta Nissen
Lou and Nancy Angoli	Peter and Tana Hatton	Carol and Dennis O'Shea
Darlene Aspedon	Dennis Heater	Donna Owens
Jesse and Susan Averette	Alan Hilles	Andrea Patterson
Melissa Baldwin	Katherine Holden	Jean Pozzi
Ed and Jo Ann Barnum	Arlie Holm	Cheryl Puddy
Sarah Baylinson	Margaret Holman	Steven Raymen
Connie Bettsworth	Tracy Huettl	Joan and Bill Reckwerdt
Mary Biehn	Andrea and Ben Hunnell-DuPree	Robert and Donna Reed
Kim and Carolyn Boddie	Phyllis Hurworth	Ann and Paul Reynolds
Scott Bolduc	Steve Hussey	Dave Rippetoe
Gordon and Joyce Boon	Larry Jacobs	Robert Ritter
Serita Bowen	Les and Pat Joslin	Marcia Rose
Bonnie Boyd	Kim Kelley	Sharron Rosengarth
Edward Burns	Heidi and Bob Kennedy	Pat and Darlene Ross
Gail and Muriel Carbiener	Julia and Ronald Kennedy	Richard Ross
Phil Chang	Timothy Kennedy and Angela Kelly-Kennedy	Marcia and Jim Schonlau
Jim and Judy Crowell	Shirley Kilpatrick	Barbara Sheeley
Gordon Dahlin	Roger and Joyce Kirk	Lennard and Delane Sholes
Gary and Cheryl Davis	Chris Kuka	Theresa Skarsten
Alyce Dawes	Ronald Lambert	Sandy Stephenson
Sharon Dawn	William and Marianne Lang	Donald Stevens
Dory Delp	Larry and Theresa Langley	Mel Stout
Ed Donohue	Therese Langley	Ann and Bob Szabo
Elsa Ruth Douglass	Curtis and Doris Lantz	Joyce Taylor
Lydia Dudley	Jan and Bill Lewis	Phillis Temple
Karen and Duke Duncan	Caroline Lincoln	Michael and Adele Tennant
Beth Ellis	Gayle Lowe	Christine Thomas
Gard Eriksen	Becky Lowry	Kathleen Tovey
Harry and Beverly Fagen	Liz Main	Kim and Sally Ward
Jim and Dixie Fancher	Larry and Connie Marshall	Nanda Webb
Richard Fleming	Elouise Mattox	Barry and Lettie Weinmann
Laurel Francis	Greg McCarthy	Nicole Weston-James and James
Suzan Frangos	Eve McFarland	Jane Williamson
Sue and David Frewing	Dick Meddish	Sally J Wilson
Donald Fullhart	Linda and Philip Meurer	Bob and Eileen Woodward
Elise Gillem	Charley and Lauri Jo Miller	Evelyn Yaw
Jo Ann Gish	Kathryn Miller	John Zancanella
Stu Goss	Linda Lee Miller	Alexandra Zell
Nunzie Gould and Jim Guild	Patricia Moreland	Deborah Zitella
Karen Green	Anonymous	Phil Zulfer

List of Annual Giving Campaign donors as of January 3, 2025



From Top: The Prizes
The Judges
Best Presentation (L),
Best Savory (R)
Best "OOPS, Nailed it!"
Best in Show

Honorable Mentions:
Tomato Aspic (L), Aunt
Bethany's Christmas
Vacation Salad



Holiday Gelatin Salad Show

Winners, Almost Winners, and Honorable Mentions

Inspired by a desire to hold an event that was just, plain joyful, DHM hosted (somewhat on a whim) its first Holiday Gelatin Salad Show. And a joyful event it certainly was! We had nearly thirty unique entries, including savory (shrimp and aspic, anyone?), boozy (champagne and strawberries, yes PLEASE!), numerous cherished family recipes, and some eye-catching crowd-pleasers. Yes, there was even a light-up gelatin salad that elicited awestruck "oohs" and "aaaahs" from the gathered gelatin enthusiasts. Best of all, the show was an opportunity to gather as a community, socialize, and laugh. We plan to make this an annual event so mark your calendars for December 13. We are already brainstorming new categories and ways to make the show even better!

A special thanks to our esteemed judges Jared Rasic, Scott Elnes, and Lauren Redman who had the dubious honor of sampling every single salad.

The prize winners were:

Best Presentation: Rainbow Layered Jello by Lorlee

Best Savory: Lime and Cottage Cheese with Shrimp and Sour Chili Cream Sauce by Virginia and Emily

Best Family Recipe: Cherries Jubilee by Maureen (*sorry, no picture*)

Ooops, Nailed It: Champagne Shattered Bottle by Zachary

Best in Show went to Lorlee's Rainbow Layered Jello

Honorable Mentions went to Liz (L) and Julie for their Three Auntie's Tomato Aspic as well as to Katie (R) for the COMPLETE Aunt Bethany/Christmas Vacation representation.

Memorials

Ruth Burleigh

Jack and Helen Crowell
Charley and Lauri Miller

Susie Penhollow

Alyce Dawes

Gary Wild

Tracy Alexander

Tributes

All Water Resource Staffers

Patrick Griffith

Bonnie Burns

Edward Burns

Patti Burt

Kim Kelley

Ralph C. Curtis

Jean Rotter

Sue Fountain

Gayle Lowe

Alan C. Hilles

Alan Hilles

The Puddy Family

Cheryl Puddy

Marsha Stout

Alyce Dawes
Mel Stout
Sally Wilson



January History Pub

Tuesday, January 28, 2025

**Madness in Progressive Era Oregon:
The Experience of Women at the Oregon State
Insane Asylum, 1900-1910**
*Presented by Rebekah Averette,
DCHS Collections Manager*
Doors open at 6:00 p.m., Presentation at 7:00 p.m.

Between 1900 and 1910, state mental hospitals were transitioning from a "moral treatment" model to a focus on "moral hygiene" in the era of early medicalized psychiatric treatment. Historian Rebekah Averette examines how the stories of patients in the Oregon State Insane Asylum give insight into the political, social, and cultural beliefs that contributed to the problematic large-scale asylum model which became the basis of mental health treatment in the United States.



Born and raised in Oregon, Rebekah's fascination with history led her to earn a bachelor's degree in history and German from the University of Oregon. She received a master's degree in teaching at the University of Washington and has recently completed her master's in history at Portland State University with a focus on women's history in Progressive Era Oregon.

[Reservations required,](#)
[\\$5 per person](#)

www.mcmenamins.com/events/

Free Presentation



Letitia Carson: Pioneer Homesteader

Wednesday, January 29, 2025
Presented by Zachary Stocks, Public Historian and Executive Director of Oregon Black Pioneers
5:30 p.m., Free Parking after 5:00 p.m.
OSU Cascades; Ray Hall Atrium
1500 SW Chandler Ave., Bend

Zachary Stocks will discuss Letitia Carson, an early Black pioneer woman whose first claim was on current OSU holdings in Corvallis, and was one of the first Black pioneers to file her own claim in Douglas county.



**For more information contact Janet Rankin:
Janet.Rankin@osucascades.edu**

Mark Your Calendars

JANUARY

- 1 MUSEUM CLOSED FOR NEW YEAR'S DAY
- 28 **HISTORY PUB: MADNESS IN PROGRESSIVE ERA OREGON;
The Experience of Women at the Oregon State Insane Asylum, 1900-1910**
Presented by Rebekah Averette, Deschutes Historical Museum Collections Manager
McMenamins Old St. Francis; 700 NW Bond St., Bend
Father Luke Room, 7:00 p.m., doors open at 6:00 p.m.
[Reservations required, \\$5 per person](#)
- 29 **LETITIA CARSON: PIONEER HOMESTEADER**
Presented by Zachary Stocks, Executive Director of Oregon Black Pioneers
OSU Cascades Ray Hall Atrium; 1500 SW Chandler Ave, Bend
5:30 p.m.; Free Parking after 5:00 p.m.



Save the Date!

February 22: ANNUAL MEMBERS LUNCHEON; At the Bend Elks Club

