



Roses are Red...

These Valentines from the collection will warm your heart! See p. 4

When Ice is Nice!

A chilly history of ice skating in Deschutes County. See p. 2



The Homesteader

Deschutes County Historical Society Newsletter—FEBRUARY 2024

Deschutes County Historical Society Members' Luncheon

Saturday, February 24, 2024 11:30 a.m.—2:00 p.m.

[Bend Elks Lodge: 63120 Boyd Acres Rd. Bend](#)

Throughout the years, the members of the Deschutes County Historical Society and Museum gathered at the Pine Grange Hall to share a meal and hear updates from the staff and board. It was a chance for friends to reconnect, and for us to announce changes in leadership, programming, and share our upcoming projects. Then came the COVID time warp.

Since our last meeting in 2020, we have welcomed the Deschutes Pioneer Association members into the group, created several new exhibits and events, and have many more exciting announcements to share!

With a new era comes a new venue and menu. The 2024 Membership Luncheon will take place at the Elks Lodge in Bend. Doors will open at 11:00 a.m., with a welcome at 11:30. Lunch will be a choice of prime rib or salmon, baked potato, salad and dessert. Members are asked to RSVP by February 17 with their preferred protein choice. Thanks to left over funds from the DPA merge, the meals will be partially subsidized so that each member's lunch will cost \$20.

Following lunch, the board and staff will provide updates to DCHS and DPA programs, and we will play a game of Deschutes History Jeopardy! You and your tablemates will play for fun prizes and bragging rights.

To reserve your lunch, please complete the form on p. 6 and return to the Deschutes Historical museum with payment, or members can pay online:

www.deschuteshistory.square.site, search for DCHS Annual Members Luncheon. Please be sure to select your preferred menu option.

Thank you members, we are looking forward to gathering with you again!

Meeting Agenda

- 11:00 a.m. Doors Open
- 11:30 a.m. Welcome
- 12:00 p.m. Lunch Served
- 12:45 p.m. Updates from the DCHS Board and DPA Committee
- 1:15 p.m. Program:

Deschutes History Jeopardy!



How well do you know your Deschutes County history? Compete for prizes and bragging rights!

2:00 p.m. Adjourn

Ice Skating the High Desert Way

By Vanessa Ivey, Museum Manager

When the icy arctic weather blows into Central Oregon, freezing roads, closing schools and keeping most of us inside, it is hard to imagine getting excited for the near zero weather. However, for the winter weather enthusiasts of yesteryear this was just the temperature worth waiting for. Single digit weather froze local waterways, creating the perfect ice skating conditions.

In the early 20th century, ice skating was as popular in Central Oregon as skiing. Where there were several inches of frozen water, skaters were found skating along the edges of the Deschutes River or its offshoots, following irrigation canals, ponds and lakes.

"Although the mercury dropped to 11 degrees below zero last night, within one degree of the coldest of the season...the river channel is still kept clear and skating on the ice, formed at the sides of the Deschutes, is becoming more and more popular." *Bend Bulletin* January 18, 1917 .

The local paper was always a great source to report skating locations and conditions, popularizing skating parties, attracting hundreds of skaters in a single night, despite the poor road conditions.

"Approximately 500 people from virtually every section of Deschutes county, were on the ice of the upper Tumalo reservoir Sunday afternoon, darting over the mile long surface of ice on skates, ice boats and sleds. The surface of the ice is said to have been the best ever seen on any body of water in Deschutes country." *Bend Bulletin* January 4, 1926.

Tumalo Reservoir (1920-1970s)

Located five miles west of Tumalo, Tumalo Reservoir was the result of the construction of a dam built for the Tumalo Irrigation Project in 1914. The project failed but a smaller version of

the original reservoir remains. The water is diverted from the Deschutes River via the Tumalo Feed Canal.

As one of the larger skating locations in the area, the local ice hockey clubs could be found here dueling it out on the ice, sticks and pucks flying across a stretch approximately two miles in distance. Hijinx on the ice was common, too. When the ice was particularly good, someone would drive their lightweight car across the rink to the opposite shore, then return over the ice hauling scores of skaters behind the car, hanging on to each other's coattails.

For more than twenty-five years this was a popular skating spot for the communities around Deschutes County. When the ice permitted, hundreds of skaters visited each day, skating well into the night under the stars with bonfires blazing along its banks.

And what's a party without music? In one *Bend Bulletin* story, Lloyd Douthit reported the reception at the reservoir was excellent, no interference of any kind:

"Juniper trees, the icy water of the artificial lake and an automobile were used in stringing up an improvised aerial and in placing the ground wire. One end of the aerial was fastened to a tree and the other end to a car. The ground wire was placed through the ice and sunk to the bottom of the pond. A six-tube set was used by Douthit." *Bend Bulletin* Jan 13, 1926.



Mirror Pond, 1917



Tumalo Reservoir

- Continued on page 3

Deschutes Historical Museum

129 NW Idaho Avenue
Bend, OR 97703
Open Tuesdays-Saturdays
10:00 a.m. to 4:30 p.m.
541.389.1813

www.deschuteshistory.org
info@deschuteshistory.org

Museum Staff:

Kelly Cannon-Miller, Executive Director
Vanessa Ivey, Museum Manager
Rebekah Averette, Collections Manager
Tracy Alexander, Membership Officer
Michelle Patrick, Visitor Services



2024 DCHS Board of Directors:

Jane Williamson, President
Karen Green, Vice President
Heidi Kennedy, Secretary/Treasurer
Adrian Bennett, Past President

Board Members:

Mike Berry, Paul Claeysens,
Tony DeBone, Greg Fulton,
Erik King, Susie Penhollow,
Liz Rink



Complete minutes of the meetings of the Board of Directors are on file with the Museum office.

Continued from P. 2— Ice skating the High Desert Way

It was reported that music from St. Francis Hotel in San Francisco was one of the many broadcasts picked up and could be heard on the opposite side of the pond.

Irrigation ponds such as Juniper Lake and Mayfield Pond (1920s to 1960s)

Irrigation ponds and lakes were very popular skating sites. Juniper Lake covered nearly five acres on top of “the plateau beyond the Eastern Star grange hall.” The natural skating rink provided excellent ice if you didn’t mind the winding route to find it. For those visiting Bend, the locals gave brief directions: “Past Grange Hall to the end of the lane, then about three miles straight east.” Or, “eight miles east of Bend, drive past Grange Hall, turning to the right when the second road is reached.” Eastern Star Grange, one of the area’s oldest halls, is located off Alfalfa Road (Powell Butte Hwy).

In 1924, the discovery of the lake was announced and quickly became a favorite for nighttime skating parties. Mrs. T.H. Foley was reported to have hosted such an excursion for Mrs. R.C. McClure’s birthday: “A very enjoyable evening was spent by the seven ladies.” (*Bend Bulletin* January 23, 1926).

In 1946 under the headline “Skating Is Ideal On Mayfield Rink,” *The Bend Bulletin* reported Myron Symons discovered a skating pond on the Mike Mayfield ranch. Mayfield Pond, four miles east of Bend Airport and six miles west of Alfalfa, was named for ranchers Michael and Annie Mayfield, who owned land near Alfalfa. The 10-acre pond is surrounded by junipers and was also possibly called Juniper Lake.



Troy Field Rink, 1949

Troy Field Rink (1921 to 1960s)

As much as ice skating is a fun winter pastime, it does have its dangers. This was not lost on the parents of the local community who required an alternative for children skating on the ice margins of the Deschutes River and ponds.

In Bend, a vacant half-block was flooded to allow skating within the city limits. *The Bend Bulletin* reported over Christmas break that the perfect lot had been located. “...The vacant half block east of Bond street, between Louisiana and Kansas avenues is being flooded today under direction of Fire Chief Tom Carlon.” (*Bend Bulletin*, December 22, 1921).

The lot located just west of Troy Laundry became known as Troy Field. The fire department placed water on the field until a good smooth surface was built up, over several days of cold

weather. The ice covered the entire block.

Myron Symons believed Bend could have plenty of ice skating every winter, as long as empty lots were available. In January 1949, he took it upon himself to prep and flood the Troy Field rink, later receiving full cooperation from the city. “What we need is an organization prepared to go to work at a moment’s notice,” he told the *Bend Bulletin*.



Myron Symons with his 6 year-old grandson, Mike Symons
Bend Bulletin, February 1, 1949

With the help of the city recreational department, the block long and half-block wide rink was maintained, its surface watered nearly every night, building up the thickness of the ice to six inches in some places. No admission cost was charged to skaters who came from across Deschutes County expressing it was one of the best outdoor rinks in the northwest. Over the first season under Symons’ watch, it was conservatively estimated that 10,000 persons used the ice rink. Expert figure skater, Miss Christine Lassee, was on hand for free figure skating lessons, and instruction was always available to beginners and advanced skaters alike.

In previous years an army of broom sweepers would be called upon to clean the local rink, but under ‘Architect’ Symons those became a thing of the past. In 1949, the city



Motorized Rink Sweeper.
Bend Bulletin February 3, 1949

motorized the operation. In the evenings Robert Johnson would drive a tractor fitted with a giant roller brush across the rink, sweeping it free of snow and debris.

Some of you may be saying “But what about...” and you are right! There were many other skating sites across the county, including Vandeventer Ranch, Hoskins’ Pond at Lower Bridge, Baker’s pond in Deschutes River Woods, and the pond at Shevlin Park fish hatchery. Some are even still around. So, next time we get near zero weather, grab your skates, bundle up, and get nostalgic.

Know another great ice skating spot in Deschutes County? Have a story you’d like to share? Please send your ice skating memories to the museum:
email: info@deschuteshistory.org
Mail: 129 NW Idaho Ave Bend, OR 97703

VALENTINES FROM THE COLLECTION

By Rebekah Averette, Collections Manager

Valentines Day is nigh! For many a romantic cynic, the day Cupid roams the earth shooting his little arrows of mischief evinces groans and eye rolls. Isn't Valentines Day just another excuse to lure hopeless (or guilt-ridden) romantics to buy overpriced cards, chocolate and flowers or begrudgingly spend an entire paycheck on an expensive dinner?

Setting aside cynicism, everyone loves love, right? We can all remember the first blush of new love and the giddy feeling of being in the presence of a crush. Who can't recall the angst-ridden pangs of a fresh romance or the crushing pain of unrequited love and heartbreak? And, even amid life's many trials and tribulations, it is important to remember that love is universal and human connection is one of the most important aspects of the human experience.

When I was an elementary student, one of my favorite school traditions was the annual Valentines Day party. The whole class would craft homemade mailboxes (teachers always used this as an opportunity for an art project) and my mom would take me to the local drugstore to carefully select the Valentines I would deliver to each student in my class. It was always such a wonderfully diverting occasion, tearing through my batch of Valentines, hoping for an extra sweet note from whoever I had a crush on at the time. The red Kool-Aid flowed, sticky fingers grabbed at sugar cookies, and crumbs and pink flecks of frosting carpeted the floor. (I am sure the custodial staff didn't enjoy the aftermath of our Valentines Day parties quite as much as we did.)

The giving of Valentines is not a new phenomenon and people have been sharing these little notes to celebrate Valentines Day for centuries. Early valentines were handmade affairs until the first commercially produced cards appeared in England in the late 18th century, printed, engraved, or produced from woodcuts. How-to books, such as "The Young Man's Valentine" and "The Lady's Own Valentine Writer" (both 1797), were published to help bewildered, young lovers pen sentimental odes to their sweethearts.

The Industrial Revolution made commercially produced Valentines the norm. All varieties and themes were available. In the United States, Esther Howland is credited with being the "Mother of the American Valentine", as she was the first to mass produce valentines in the United States in the 1840s. Esther decided to try her hand at the Valentine business after recognizing how expensive and unaffordable valentines imported from England were.

Hallmark is the name we now most associate with greeting cards, and while sales of cards for many occasions have fallen, Hallmark claims that Valentines Day themed cards are going strong. They estimate that more than 140 million Valentines cards will be sent this year!

Although sentimental and romantic valentines remain the most common, even the earliest mass producers of Valentines created "vinegar" Valentines that made fun of certain segments of the population, such as spinsters, homely bachelors, overbearing wives, and many other targets of derision.

The Deschutes Historical Museum is home to a lovely array of Valentines that were once exchanged between historic residents in our community. I have yet to find any particularly "vinegary" ones, so I hope these sweet, historic odes to Cupid bring some joy, and dare I say "love", to your February!





Remembering Scott Eric Stuemke

1953-2023

With great sadness, we have lost a long-time Bend resident, Deschutes Pioneer, Deschutes County Historical Society board member, and consulting archaeologist, Scott E. Stuemke.

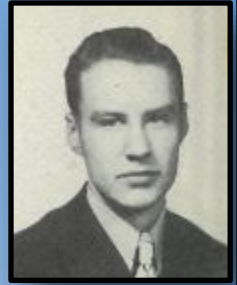
Scott was born in Orange, California, on January 20, 1953, and attended Orange High School. Scott's mother, Virginia Ginger" (Eckley) Stuemke, was an archaeologist and influenced his future education and career; she passed away in 2018. Scott went to Cal State Fullerton for college and moved to Oregon in the late 1970s. I first met Scott while attending graduate school at the University of Oregon in Eugene. He received his Master of Science in Anthropology there, emphasizing Archaeology in 1987. He was a seasonal archaeologist on the Fremont and Deschutes National Forests from 1986-1990, advancing to the Tribal Archaeologist for the Confederated Tribes of the Warm Springs Reservation from 1990 to 2000. He moved to the Oregon National Guard as a cultural resource specialist and environmental coordinator from 2000-2005. He began consulting in 2007 as the owner and principal of Archaeological and Historical Associates, LLC. He was a Registered Professional Archaeologist listed by the Oregon State Historic Preservation Office and other agencies. His later work centered around supporting various regional irrigation districts in their efforts to modernize their systems and protect aquatic habitats. He published articles on local history in *The Source*. He was a former rock climber, Mt. Bachelor Ski Patrolman, budding luthier, gardener, beekeeper, and paddler with the Bend Outrigger Canoe Club. Scott died on December 3, 2023, just short of turning 71.

He is survived by his sister, Victoria Serrao; his brothers Jon 'Fritz' Fredrick Stuemke and Kurt G. Stuemke; twin sons, Eric, and Brandon Stuemke; his grandchildren, Tristan, Victoria, and Maxwell Stuemke; and his partner, Tina Kilpatrick of Bend. He will be missed by all who knew him and the community he called home.

~Paul Claeysens, archaeologist and DCHS board member

CALL FOR APPLICATIONS

The Leon Devereaux Jr.
Historical Society
\$1000 Scholarship 2024



Leon Devereaux Jr.
Bend Senior High School
Class of 1941

DEADLINE TO APPLY: MARCH 31, 2024

The Deschutes County Pioneers established a scholarship for high school seniors years ago. The Pioneers recently merged with the Deschutes County Historical Society (DCHS), and DCHS will continue awarding the scholarship. The mission of DCHS is to preserve, promote and celebrate our shared local history. The purpose of the scholarship is to carry out this mission by encouraging high school seniors in Central Oregon to foster an interest in the community's history through qualitative and quantitative research and evaluation of archives and sources presented in a form that inspires others to learn and take action to shape the future. There are two \$1,000 scholarships available.

Scholarship Eligibility:

1. Applicant must be a registered student at an accredited high school or accredited home school program in Central Oregon (defined as Deschutes, Crook and Jefferson counties).
2. Applicant must be a senior level student through the credit hours at their institution or program.
3. Applicant must have a minimum cumulative grade point average (GPA) of 3.0 or higher on a 4.0 scale.
4. Acceptance at an institution of higher learning.

For complete details and to apply, please visit the DCHS website:

deschuteshistory.org/ldscolar/

Tributes

Ralph C. Curtis
Jean Rotter

Sharon Hildebrand
Matthew Perry

Ray Hatton
Peter and Tana Hatton

We are looking forward to seeing you once again at our Annual Members' Luncheon on February 24, 2024! Please RSVP by completing the form below and returning with payment to the Deschutes Historical Museum or visit our online store to purchase your lunch(es) online: www.deschuteshistory.square.site by February 17, 2024



Deschutes County Historical Society Members' Luncheon

Saturday, February 24, 2024 11:30 a.m.—2:00 p.m.

[Bend Elks Lodge: 63120 Boyd Acres Rd. Bend](#)

Name(s): _____

Address: _____

Email: _____ Phone Number: _____

Preferred Entrée: Prime Rib _____ Salmon _____

If completing form for more than one person, please indicate number for each entrée

Lunch cost is \$20 per person

Amount Enclosed: _____

*Please mail or drop off this form with payment to the
Deschutes Historical Museum by February 17, 2024:
129 NW Idaho Ave. Bend, OR 97703*

Office Use Only:

Method of Pmt: _____

Date Entered: _____

Added to list: _____

Initials: _____

Mark Your Calendars

FEBRUARY

- 14 OREGON'S 165TH BIRTHDAY
- 14 VOLUNTEER MEETING: 2024 DCHS EVENTS
1-2:00 p.m. at the Deschutes Historical Museum
- 24 DESCHUTES COUNTY HISTORICAL SOCIETY MEMBERS' LUNCHEON
11:30 a.m.—2:00 p.m. Doors open at 11:00 a.m.
Bend Elks Lodge: 63120 Boyd Acres Rd. Bend
*Please complete the form above, \$20 per person
RSVP by February 17, 2024*

